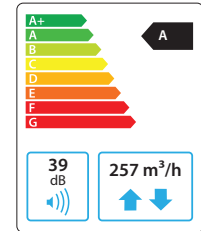


Domekt R 190 V C8

Maximal air flow, m ³ /h	257
Maximal air flow, l/s	71
Reference flow rate, m ³ /s	0,05
Reference pressure difference, Pa	50
SPI, W/(m ³ /h)	0,28
Thermal efficiency of heat recovery, %	80
Electric air heater capacity, kW / Δt, °C	0,5/8,1
Supply voltage, V	1~230
Maximal operating current HE, A	4
Electric power input of the fan drive at maximum flow rate, W	66
Electric power input of the fan drive at reference flow rate, W	24
Filters dimensions BxHxL, mm	285x125x46
Unit dimensions BxHxL, mm	325x605x599
Maintenance space, mm	300
Unit weight, kg	39



Acoustic data

A-weighted sound power level L_{WA} , dB(A) at reference flow rate

Supply inlet	52
Supply outlet	64
Exhaust inlet	52
Exhaust outlet	65
Casing	39

A-weighted sound pressure level L_{pA} , dB(A)

10 m² normally isolated room, distance from casing – 3 m.

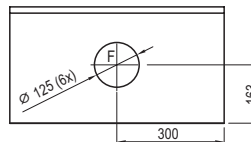
Surroundings	28
--------------	----

Temperature efficiency

Outdoor temperature, °C	Winter					Summer		
	-23	-15	-10	-5	0	25	30	35
After heat exchanger, °C	12,9	14,5	15,5	16,5	17,5	22,6	23,6	24,6

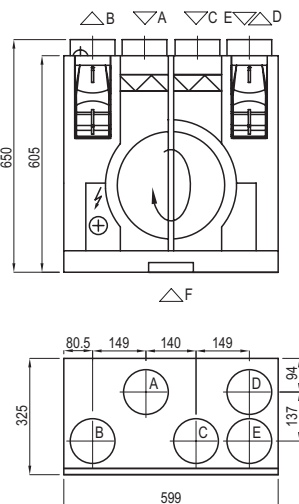
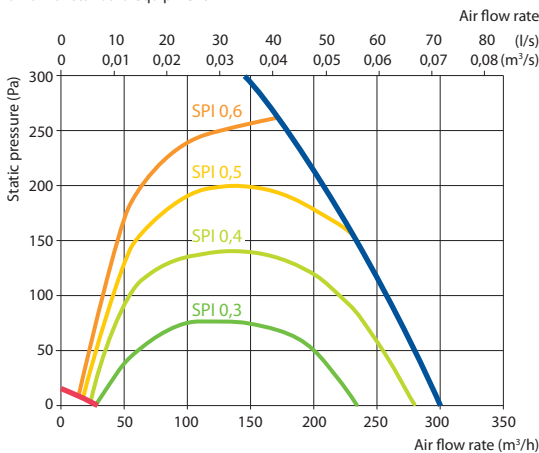
indoor +22°C, 20 % RH

Shown as left (L1)

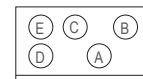


Performance

Unit with standard equipment



Shown as right (R1)



- A outdoor intake
- B supply air
- C extract indoor
- D exhaust air
- E additional extraction connection (by-pass – extraction without heat recovery)
- F kitchen hood connection (by-pass – extraction without heat recovery)

Accessories

Closing damper	AGUJ-M-125+LF230/CM230
Silencer	A/D AGS-125-50-600-M B/C AGS-125-50-900-M
Water heater	DH-125
PPU	PPU-HW-3R-15-0,4-W2
2-way valve (heater)	VVP47.10-0,4

Water cooler	DCW-0,2-1
2-way valve (cooler)	VVP47.10-1,6
Kitchen hood	KH
Decorative panel	DP
Air distribution box	OSD-200 VE-125
Outdoor grill	LD-125
Water heater-cooler	DHCW-125

C6.1



C6.2

